

Recap on some the fundamental changes in the TTM Industry

– Onsite Assessments



New Zealand Government

About the Assessments and Verified Closures

You need these to be able to be practicing in your role!
These are the onsite Assessments for working on the road

STMS Assessments on Cat A & B roads

New Trainees under new system from 1st April 2021

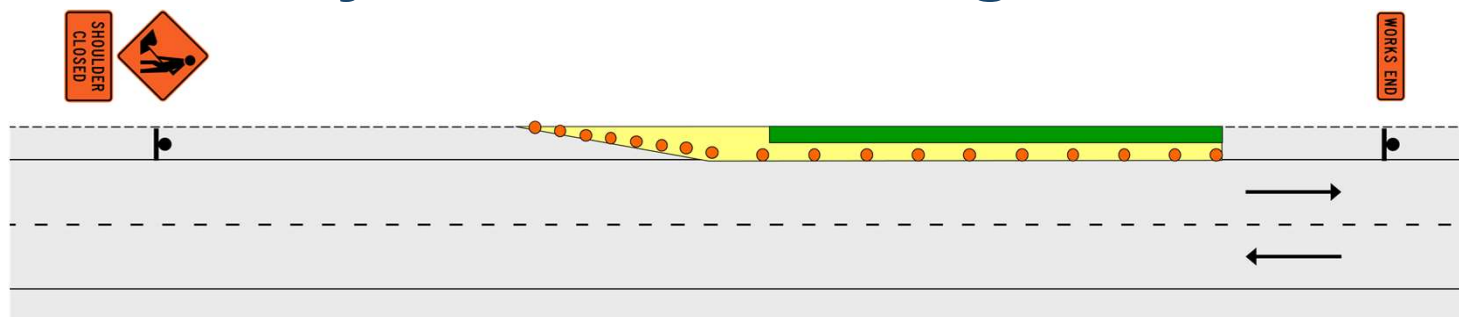
Must complete **3** closures from the list
of possible closures
(X2 Verified sites by Mentor & X1 by the
TTM Assessor)

About the assessment

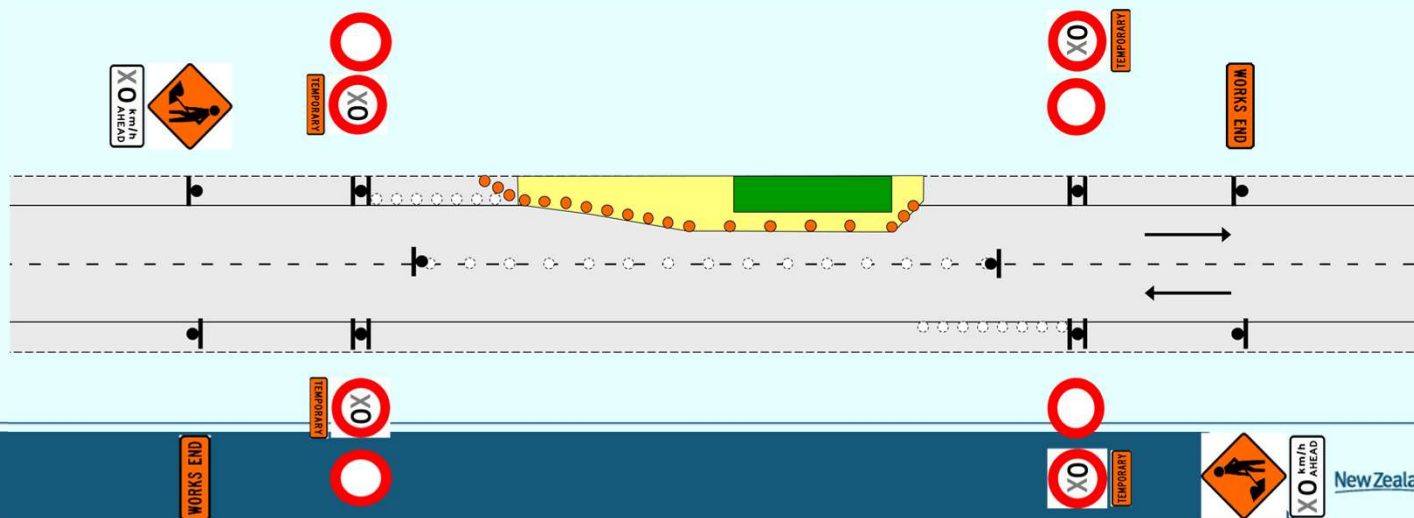
- The assessment worksite must be on a live network
- The assessment can be completed:
 - at a worksite set up just for the assessment, or
 - at an actual worksite

Mentor sites - Any 2 of the following closures...

1 Shoulder closure

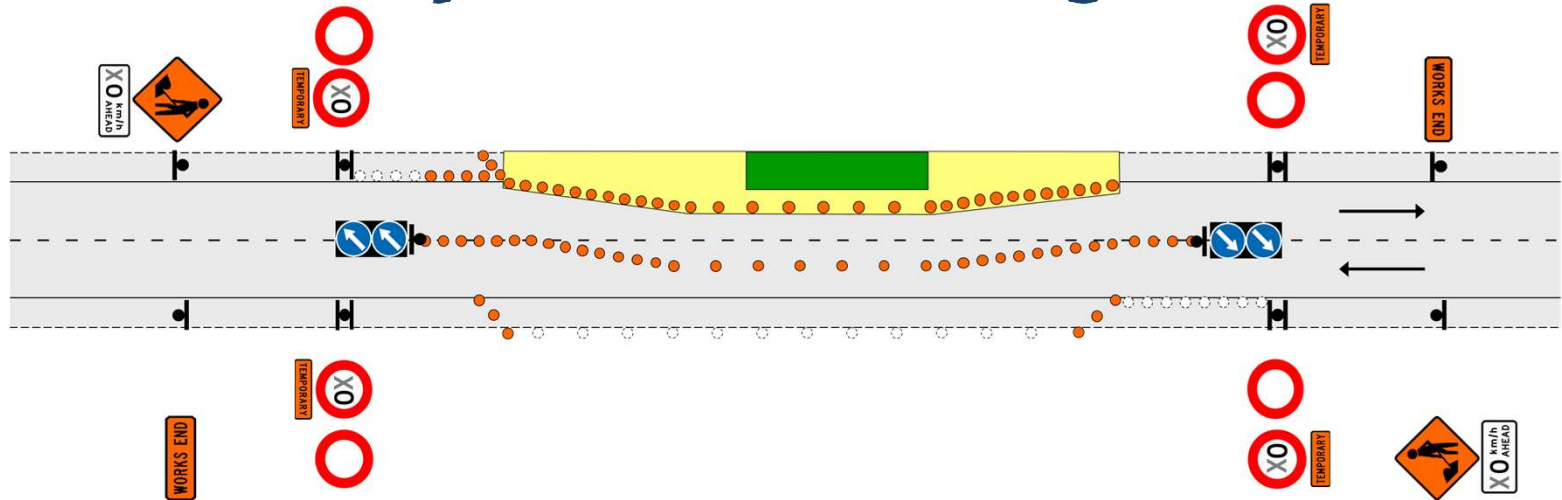


2 Partial lane shift

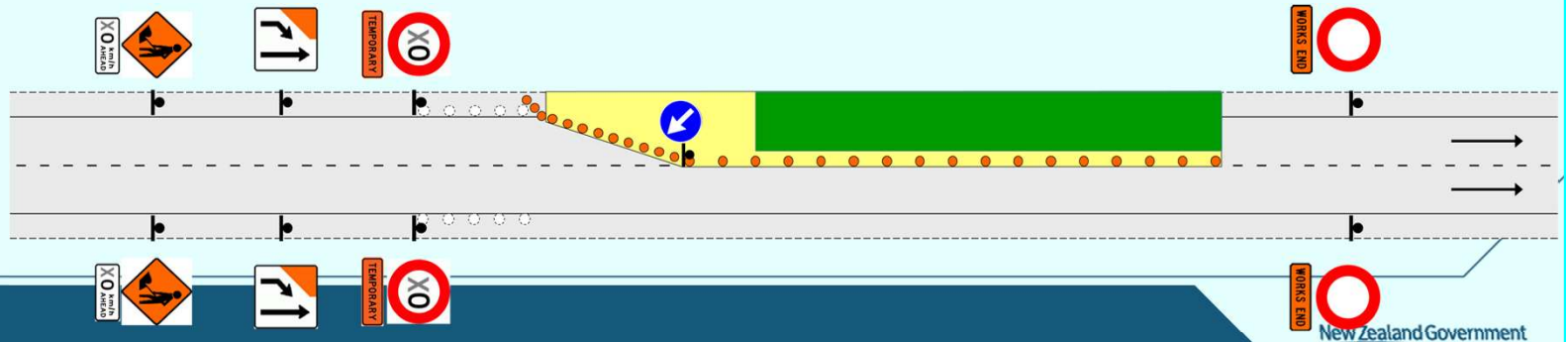


... *Mentor sites* - Any 2 of the following closures

3 Two-lane diversion

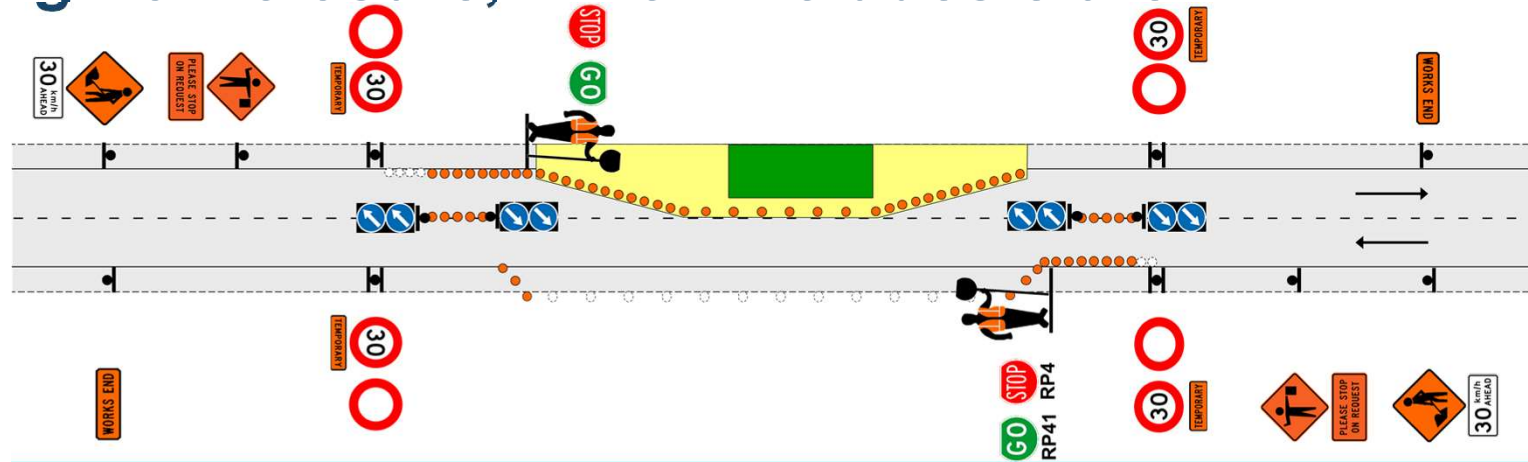


4 Multi-lane closure

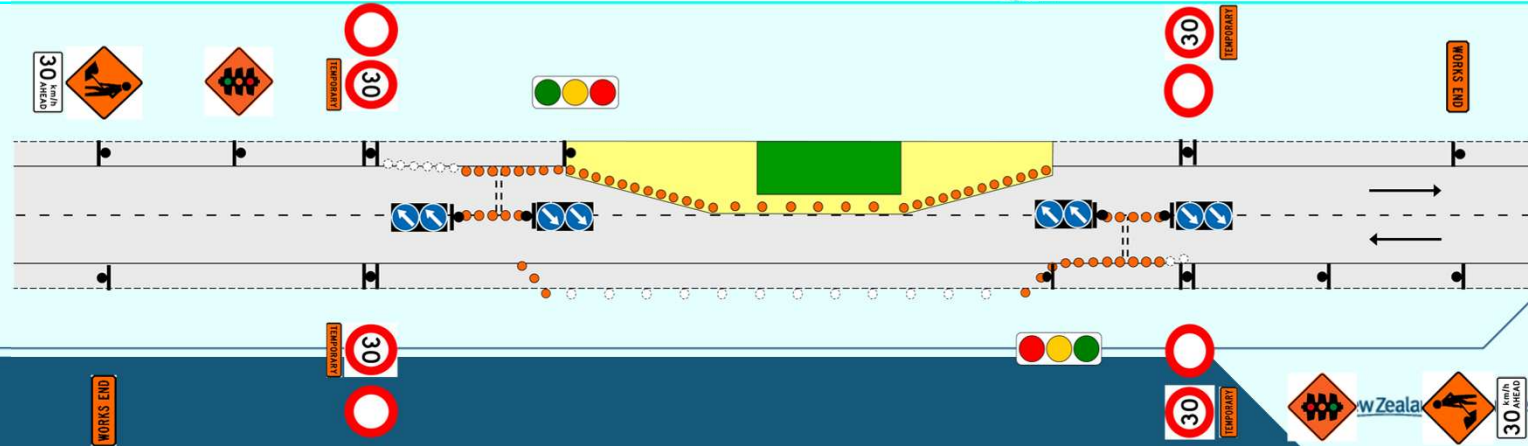


X1 Assessment site by TTM Assessor must be alternating flow closure, which includes either:

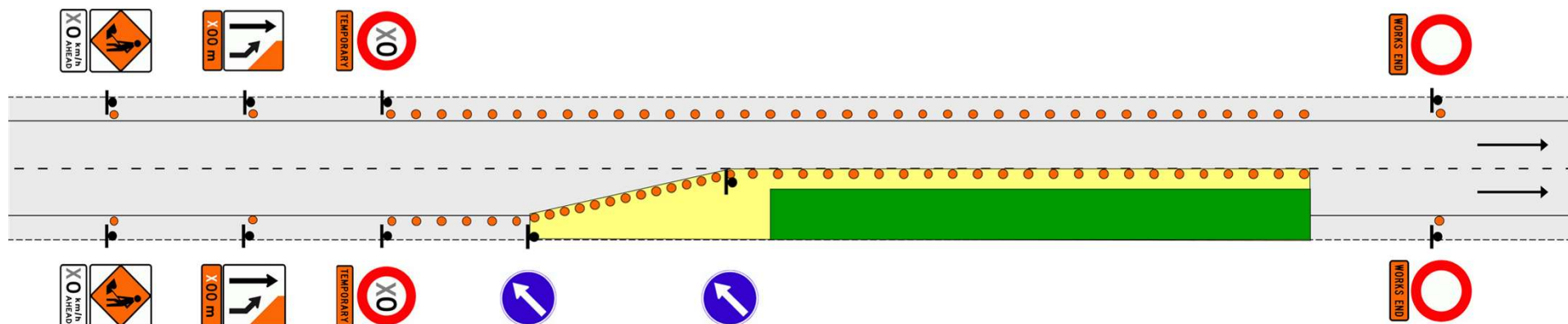
1 Stop/go



2 Portable traffic signals



Cat C Roads - you will be assessed on – Lane merge or chicane (70km/h or more)



Additional requirements

**Only one
closure can
be a shoulder
closure**

**One closure
must deal
with either
pedestrian or
cyclist
management**

**You will be assessed on a worksite
requiring alternating flow control**

Existing qualified STMS who held the qualification prior to 1st April 2021 they can go straight to the X1 Assessed site... but ask yourself the following

Are they confident and competent! IE that they will they pass the assessment! Have you looked at the Assessment book?

Don't forget that you need to do all the steps (verified and onsite assessments) as we covered in the previous slides we just covered on each Categories road your wanting warranted/qualified in IE CAT A, B or C or all or a mixture etc

Overview of what STMS Assessment covers

Stage of the assessment	Actions
Before leaving the yard	<ul style="list-style-type: none">• Initial check of TMP• Carry out vehicle checks• Carry out equipment check
At the site	<ul style="list-style-type: none">• Check the TMP suits the operation• Carry out TTM crew briefing• Direct the installation of TTM• Ensure equipment is used correctly• STMS drive through worksite inspection• Complete paperwork
While TTM installed	<ul style="list-style-type: none">• Carry out visitor inductions• Ensure health and safety procedures are followed for safe entry to and exit from the worksite• Carry out site checks and self audits• Implement contingencies

Overview of what STMS Assessment covers

Stage of the assessment	Actions
While TTM installed (Continued)	<ul style="list-style-type: none">• Monitor traffic volumes and queues• Monitor pedestrian numbers and special requirements
Removal of TTM	<ul style="list-style-type: none">• Direct removal of TTM• Ensure equipment is stowed correctly• Complete paperwork
Make provisions for unattended worksites	<ul style="list-style-type: none">• Make provisions for any unattended worksites under TTM, ensuring road users can pass by or through.• Attach documentation.

**Some things that may catch existing STMS out,
areas we see we do need to improve on which are
also part of the Assessment ... as follows**

Risk assessment

- Before the TTM is installed the STMS completes a **risk assessment on the site** as part of ensuring the TMP is fit for purpose (right for site)
- If the STMS decides to proceed with installation of the TTM, they also complete a **risk assessment on the task** of installing the TTM at the worksite



Risk assessment

- Once the worksite is installed the STMS **continues to monitor risks** to identify:
 - Changes to existing risks
 - New risks
- When the TTM is to be removed, the STMS completes a **risk assessment** on the task of removing the TTM from the worksite



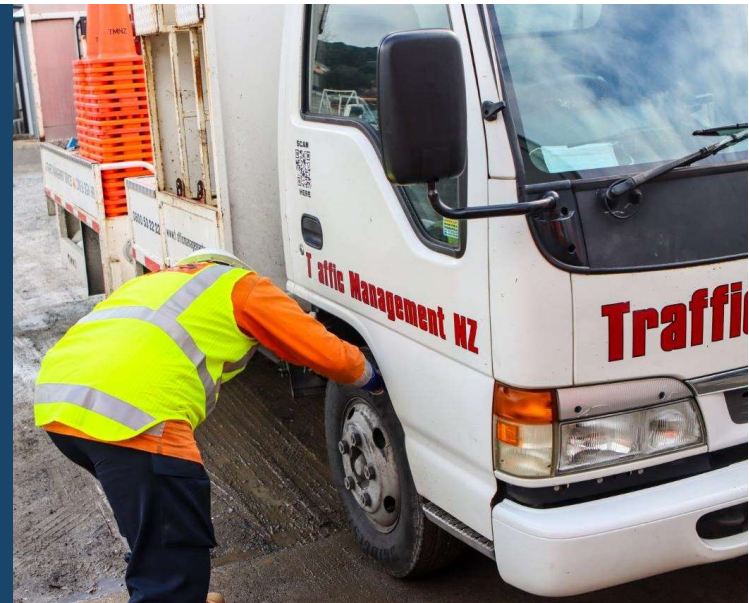
Initial check of TMP and resources

What are some of the things
you need to check on the
TMP?



Pre-start check - Vehicles

What will you be checking on the vehicles?



Pre-start check - Equipment

- All required TTM equipment loaded (for example cones, signs, stands, ballast, cone bars, safety fences, pedestrian ramps)
- TTM equipment in acceptable condition
- PPE
- Comms

